



C E R T I F I C A T E

Certificate No. 21-PPA-0001509/03-M18-TIC

WE HEREBY CERTIFY THAT THE PHOTOVOLTAIC MODULES WITH THE MODEL

DS572380M, DS572375M, DS572370M, DS572365M, DS572360M, DS572355M, DS572350M, DS572345M, DS572340M,
DS572335M, DS572330M, DS572325M, DS572320M, DS572315M, DS572311M, DS560315M, DS560310M, DS560305M,
DS560300M, DS560295M, DS560290M, DS560285M, DS560280M, DS560275M, DS560270M, DS560265M, DS560260M,
DS536190M, DS536185M, DS536180M, DS536175M, DS536170M, DS536165M, DS536160M, DS536155M, DS572358W,
DS572355W, DS572350W, DS572345W, DS572340W, DS572335W, DS572330W, DS572325W, DS572320W, DS572315W,
DS572310W, DS572305W, DS572300W, DS572295W, DS572293W, DS560295W, DS560290W, DS560285W, DS560280W,
DS560275W, DS560270W, DS560265W, DS560260W, DS560255W, DS560250W, DS560245W, DS536179W, DS536175W,
DS536170W, DS536165W, DS536160W, DS536155W, DS536150W

PSS-24345 & PSS-24325 (Tested Types)

And with Types extended for similarity (*)
- See Annex -

OEM APPLICANT & LICENSE HOLDER
DUSOL Industries LLC
W156, Dubai Maritime City, Dubai, UAE

IS IN COMPLIANCE WITH THE REQUIREMENTS SET OUT IN CERTIFICATION PROGRAM
TIC-PR-PC-08-Annex 13 Product certification scheme PV

IEC 62716: 2013

Ammonia corrosion testing of photovoltaic (PV) modules

**AS RESULT OF THE TEST CARRIED OUT BY KACST PV LAB.
ACCREDITED BY GAC no. ATL 0046**

REPORT No.

TIC-KPVL18/ACT0005_ IEC62716 & TIC-KPVL18/ACT0006_ IEC62716

Expiring date 23.01.2025
(Providing that the testing basis continues unchanged)

Notes: (*) The OEM applicant and the manufacturer declare that these products are constructed using the same materials, components and processes as the tested types of PSS - 24345 & PSS – 24325. Further details on certified models are reported on the attachment. Technical data, materials and components description are into the indicated test reports. Any changes of the design, materials, components or processing may require the repetition of some of the qualification tests in order to retain type approval. The certification is performed on tested model as complete certification and retest according to the Retest Guideline. This certificate is for type approval, based on voluntarily product test and without Factory inspection. This certificate is valid and can be used only with its annexes.



Bonn, 01.04.2021

L. L. L.

Ing. K. Lindenblatt

INTERCERT Certification Body



C E R T I F I C A T E

Annex 1 of

Certificate No. 21-PPA-0001509/03-M18-TIC

THE PHOTOVOLTAIC MODULES WITH THE MODELS

Types extended for similarity* with Si-Monocrystalline PERC cell technology without need of re-testing
(according to IEC61215 "Retesting guideline"):

Type	Cell Number	Cell Size	Power [W]
DS572380M*	72	156,75x156,75	380
DS572375M*	72	156,75x156,75	375
DS572370M*	72	156,75x156,75	370
DS572365M*	72	156,75x156,75	365
DS572360M*	72	156,75x156,75	360
DS572355M*	72	156,75x156,75	355
DS572350M*	72	156,75x156,75	350
DS572345M*	72	156,75x156,75	345
DS572340M*	72	156,75x156,75	340
DS572335M*	72	156,75x156,75	335
DS572330M*	72	156,75x156,75	330
DS572325M*	72	156,75x156,75	325
DS572320M*	72	156,75x156,75	320
DS572315M*	72	156,75x156,75	315
DS572311M*	72	156,75x156,75	311
DS560315M*	60	156,75x156,75	315
DS560310M*	60	156,75x156,75	310
DS560305M*	60	156,75x156,75	305

Notes: (*) The OEM applicant and the manufacturer declare that these products are constructed using the same materials, components and processes as the tested types of PSS - 24345 & PSS - 24325. Further details on certified models are reported on the attachment. Technical data, materials and components description are into the indicated test reports. Any changes of the design, materials, components or processing may require the repetition of some of the qualification tests in order to retain type approval. The certification is performed on tested model as complete certification and retest according to the Retest Guideline. This certificate is for type approval, based on voluntarily product test and without Factory inspection. This annex is valid and can be used only with its certificate.



Bonn, 01.04.2021

L. Lindenblatt

Ing. K. Lindenblatt

INTERCERT Certification Body



C E R T I F I C A T E

Annex 2 of

Certificate No. 21-PPA-0001509/03-M18-TIC

THE PHOTOVOLTAIC MODULES WITH THE MODELS

Types extended for similarity* with Si-Polycrystalline Cell Technology without need of re-testing
(according to IEC61215 "Retesting guideline"):

Type	Cell Number	Cell Size	Power [W]
DS560300M*	60	156,75x156,75	300
DS560295M*	60	156,75x156,75	295
DS560290M*	60	156,75x156,75	290
DS560285M*	60	156,75x156,75	285
DS560280M*	60	156,75x156,75	280
DS560275M*	60	156,75x156,75	275
DS560270M*	60	156,75x156,75	270
DS560265M*	60	156,75x156,75	265
DS560260M*	60	156,75x156,75	260
DS536190M*	36	156,75x156,75	190
DS536185M*	36	156,75x156,75	185
DS536180M*	36	156,75x156,75	180
DS536175M*	36	156,75x156,75	175
DS536170M*	36	156,75x156,75	170
DS536165M*	36	156,75x156,75	165
DS536160M*	36	156,75x156,75	160
DS536155M*	36	156,75x156,75	155

Notes: (*) The OEM applicant and the manufacturer declare that these products are constructed using the same materials, components and processes as the tested types of PSS - 24345 & PSS - 24325. Further details on certified models are reported on the attachment. Technical data, materials and components description are into the indicated test reports. Any changes of the design, materials, components or processing may require the repetition of some of the qualification tests in order to retain type approval. The certification is performed on tested model as complete certification and retest according to the Retest Guideline. This certificate is for type approval, based on voluntarily product test and without Factory inspection. This annex is valid and can be used only with its certificate.



Bonn, 01.04.2021

Ing. K. Lindenblatt

INTERCERT Certification Body



C E R T I F I C A T E

Annex 3 of

Certificate No. 21-PPA-0001509/03-M18-TIC

THE PHOTOVOLTAIC MODULES WITH THE MODELS

Types extended for similarity* with Si-Polycrystalline Cell Technology without need of re-testing
(according to IEC61215 "Retesting guideline"):

Type	Cell Number	Cell Size	Power [W]
DS572358W*	72	156,75x156,75	358
DS572355W*	72	156,75x156,75	355
DS572350W*	72	156,75x156,75	350
DS572345W*	72	156,75x156,75	345
DS572340W*	72	156,75x156,75	340
DS572335W*	72	156,75x156,75	335
DS572330W*	72	156,75x156,75	330
DS572325W*	72	156,75x156,75	325
DS572320W*	72	156,75x156,75	320
DS572315W*	72	156,75x156,75	315
DS572310W*	72	156,75x156,75	310
DS572305W*	72	156,75x156,75	305
DS572300W*	72	156,75x156,75	300
DS572295W*	72	156,75x156,75	295
DS572293W*	72	156,75x156,75	293
DS560295W*	60	156,75x156,75	295
DS560290W*	60	156,75x156,75	290
DS560285W*	60	156,75x156,75	285
DS560280W*	60	156,75x156,75	280
DS560275W*	60	156,75x156,75	275

Notes: (*) The OEM applicant and the manufacturer declare that these products are constructed using the same materials, components and processes as the tested types of PSS - 24345 & PSS - 24325. Further details on certified models are reported on the attachment. Technical data, materials and components description are into the indicated test reports. Any changes of the design, materials, components or processing may require the repetition of some of the qualification tests in order to retain type approval. The certification is performed on tested model as complete certification and retest according to the Retest Guideline. This certificate is for type approval, based on voluntarily product test and without Factory inspection. This annex is valid and can be used only with its certificate.



Bonn, 01.04.2021

L. Lindenblatt

Ing. K. Lindenblatt

INTERCERT Certification Body



C E R T I F I C A T E

Annex 4 of

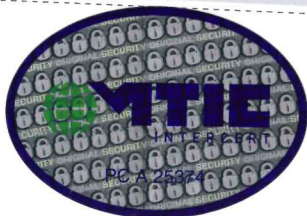
Certificate No. 21-PPA-0001509/03-M18-TIC

THE PHOTOVOLTAIC MODULES WITH THE MODELS

Types extended for similarity* with Si-Polycrystalline Cell Technology without need of re-testing
(according to IECCE "Retesting guideline"):

Type	Cell Number	Cell Size	Power [W]
DS560270W*	60	156,75x156,75	270
DS560265W*	60	156,75x156,75	265
DS560260W*	60	156,75x156,75	260
DS560255W*	60	156,75x156,75	255
DS560250W*	60	156,75x156,75	250
DS560245W*	60	156,75x156,75	245
DS536179W*	36	156,75x156,75	179
DS536175W*	36	156,75x156,75	175
DS536170W*	36	156,75x156,75	170
DS536165W*	36	156,75x156,75	165
DS536160W*	36	156,75x156,75	160
DS536155W*	36	156,75x156,75	155
DS536150W*	36	156,75x156,75	150

Notes: (*) The OEM applicant and the manufacturer declare that these products are constructed using the same materials, components and processes as the tested types of PSS - 24345 & PSS - 24325. Further details on certified models are reported on the attachment. Technical data, materials and components description are into the indicated test reports. Any changes of the design, materials, components or processing may require the repetition of some of the qualification tests in order to retain type approval. The certification is performed on tested model as complete certification and retest according to the Retest Guideline. This certificate is for type approval, based on voluntarily product test and without Factory inspection. This annex is valid and can be used only with its certificate.



Bonn, 01.04.2021

L. Lindenblatt

Ing. K. Lindenblatt

INTERCERT Certification Body